

# Wear a mask. Stay in school.



## COVID-19 School Scenarios

The option to not quarantine does not apply outside the classroom setting, including lunch, band, choir or extra-curricular activities.

### MASK REQUIREMENT

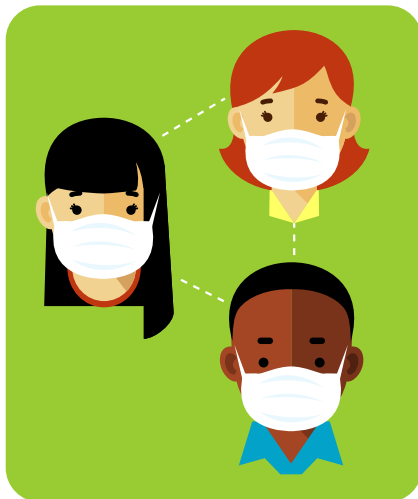
When a masked person tests positive and close contacts are wearing masks

COVID +

Close Contacts



**ISOLATE**



**NO QUARANTINE**  
EVERYONE WITHIN 3 FEET  
SELF-MONITOR

### NO MASK REQUIREMENT

When positive person and/or close contacts are not wearing masks

COVID +

Close Contacts



**ISOLATE**



**QUARANTINE**  
(ALL WITHIN 6 FT. UNLESS FULLY  
VACCINATED AND ASYMPTOMATIC)

## DEFINITIONS

### CLOSE CONTACT:

When all are masked, in school setting close contact is when an individual is within 3 feet of a positive person for greater than 15 minutes.

When anyone is unmasked, a close contact is when an individual has been within 6 feet of an infected person for greater than 15 minutes.

### SELF-MONITOR:

Perform a self-check or be monitored twice daily for a fever of 100.4 F or above. If symptoms develop, even if you're fully vaccinated, quarantine and obtain testing.

*Coordinate with your healthcare provider and local public health department.*

### QUARANTINE:

May be required when an individual has had a close contact. These individuals shall remove themselves from situations where others could be exposed/infected, and self-monitor for symptom development.

### ISOLATION:

Required when individual has tested positive for COVID-19 or develops a fever of 100.4 F or above and/or one or more of the following symptoms: a sudden onset of a cough, sudden onset of shortness of breath, or sudden loss of taste or smell. Individuals should remove themselves or be removed from situations where others could be exposed/infected.